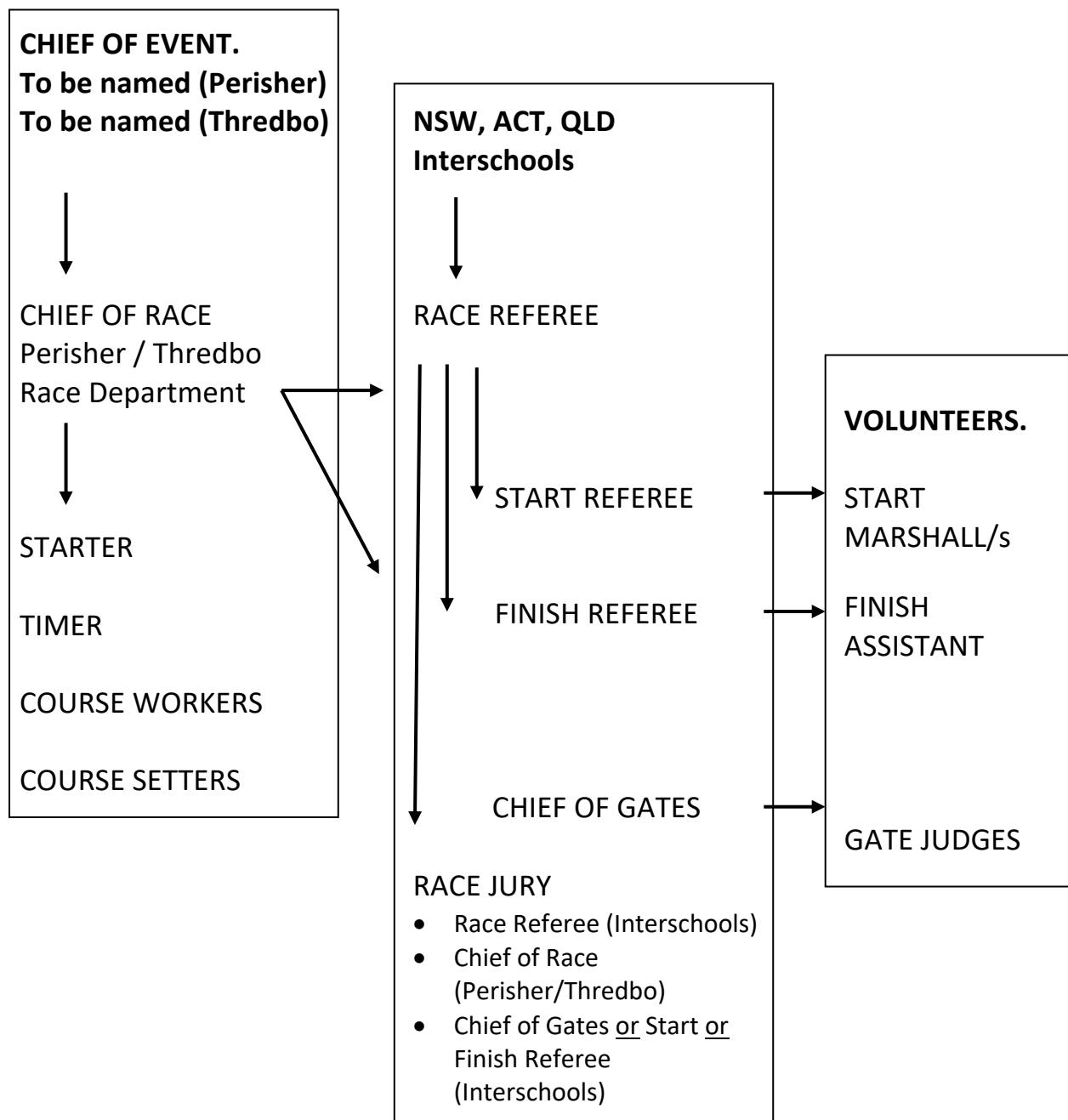




NSW, ACT, QLD Interschools Snowsports

Course Officials Guidelines

Race Event Officials for the NSW, ACT, QLD Interschools Snowsports Events



Race Referee

An experienced race official appointed by Interschool, who may have another course official role on the course.

The Race Referee is responsible for the following activities on Race Day:

- Supervise the work of all officials on the course.
- Ensure each official is wearing his or her correct identification and all equipment is working.
- Inspect the course with Chief of Race before the event.
- Liaise with the Chief of Gates and make appropriate decisions if problems occur on a gate/area.
- Inspect problem gates and disqualifications (DQs).
- Inspect the skiing/riding surface when necessary. Approve the termination of racing in consultation with the Chief of Race and/or other jury members should circumstances so dictate.
- Adjudicate on re-runs.
- Control the non-use of high fluoro-wax
- Convene Jury members as required.
- Verify and sign off all DQs and DNFs ensuring a diagram accompanies every fault or disqualification. Make sure the DQs ~~are taken to the timer at the bottom of the course promptly~~ and DNF's are taken to the Interschools staff member producing the results promptly.
- After the conclusion of the event, submit a brief written report, including accident reports where necessary.

Start Referee

The responsibilities of the Start Referee are to:

- Check into the Race Office to receive your Start Referee equipment to allow yourself time to be on course prior to the start of scheduled course inspection.
- Instruct competitors on the correct procedures during course inspection;
 - Competitors must wear their race bib visibly either on top of their jacket, or under their jacket with the jacket unzipped so the race bib number can be read.
 - Helmets must be worn with their straps secured on.
 - Competitors are not allowed to race down the course during course inspection, they must instead side slip, snow plough and/or falling leaf technique for snowboarders.
 - Only competitors, team manager, coaches allowed at their correct course time.
 - Special course inspection instructions from the race department may need to be communicated, for example the course can only be inspected by the side of the course.
- Line-up competitors in bib order for their race start(s).
- Check with the Finish Referee, Chief of Gates and Race Department that the course is ready for course inspection and race start before allowing competitors on course.
- Inform the Finish Referee and Chief of Gates when course inspection is open and closed, and when the first and last competitor from each run has started on the course.
- Inform the Finish Referee when competitors who have an approved rerun have started on the course.
- Make a note of bib numbers which Do Not Start (DNS).
- Record bib order of racers as they start.
- Record reruns as communicated by the Finish Referee.
- Be available for Race Jury if required.

Start Marshall

The Start Marshall is responsible for:

- Check into the Race Office to receive your Start Marshall equipment to allow yourself time to be on course prior to the start of scheduled course inspection.
- Assist the Start Referee with course inspection.
- Calling competitors to line-up in bib order for their race start(s).

- Ensuring that competitors race bibs can be read by course officials, helmets are secure, goggles are on and ski boot buckles are clipped up, and the competitors wear satisfactory protective clothing. No exposed skin is allowed due to safety reasons.
- If possible, check that the names on the start list you are provided correspond with the race bib numbers.
- Competitors who either are late for their race bib number order, are not ready for their start with their ski and snowboard equipment on, helmet and/or race bib on are to be placed at the end of their gender in their division, except any reruns, who should start as soon as possible.
- The control of excess personnel in the start area such as coaches, team managers, parents, especially when a competitor is within 10 race starts.

Finish Referee

The responsibilities of the Finish Referee are to:

- Check into the Race Office to receive your Finish Referee equipment to allow yourself time to be on course prior to the start of scheduled course inspection.
- Record competitor bib numbers as they finish.
- Note competitors bib numbers who do not finish (DNF).
- A competitor will record a DNF if they:
 - Did not ski/snowboard through the finish line
 - If a competitor loses one or both skis, and/or comes to a complete stop.
- Judge and inform competitors if a rerun is required.
- A re-run can be granted by the Finish Referee if a competitor:
 - Does not record a time. The resort race department timer will instruct the Finish Referee of any competitor race bib numbers that did not record a time promptly after they finish the course.
 - If a competitor was obstructed on the course due to catching up to a competitor ahead of them or a course worker on course, as examples. The competitor may choose to leave the course and report the obstruction to the nearest gate judge, ski/snowboard to the bottom of the course and report the to the Finish Referee. The competitor is not to finish the course and is not to cross the finish line. A provisional rerun will be granted and will be valid only if a jury confirms it. If the claim for a rerun is shown to be unjustified, the competitor will be disqualified for that run. If the competitor goes around the obstruction and crosses the finish line, or does not report to the finish referee, they will not receive a rerun.
- Communicate with the Referee, Start Referee, Finish Assistant regarding confirmed re-runs.
- Inform the Start Referee and Chief of Gates when the last competitor from each run has completed the course.
- Keep spectators, coaches, team managers, media and sponsors away from the run-out zone of the Finish area.
- Control the safety of competitors finishing the course, slowing them down in the Finish Area if necessary.
- Record the DQs after each run as reported by the Chief of Gates.
- Be available for the Race Jury if required.

Finish Assistant

The responsibilities of the Finish Assistant are to:

- Check into the Race Office to receive your Finish Assistant equipment to allow yourself time to be on course prior to the start of scheduled course inspection.
- Assist the Finish Referee in recording competitors bib numbers as they Finish and those who do not Finish (DNF).
- Keep spectators, coaches, team managers, media and sponsors away from the run-out zone of the Finish area.
- Control the safety of competitors finishing the course, slowing them down in the Finish Area if necessary.

Chief of Gates

Co-ordinator of the Gate Judges, who:

- Must attend briefings of race officials & know what is expected of gate judges
- Meet the Gate judges on top of the course and place them at a safe position on the course.
- Inform Gate Judges of their responsibilities and what gates they are judging.
- Continually monitor Gate Judges during the event
- Help to keep spectators off the course
- Collect the gate judge DQs at the end of each run, checking the history of any DQs and ensuring the diagrams of all DQs are clear
- Is available for Race Jury if required.
- Ensure that each DQ is reported to the Finish Referee after each run.

Gate Judge

Gate Judges are responsible for:

- Check into the Race Office to receive their Course Officials equipment to allow yourself time to be on course prior to the scheduled course inspection.
- Meet the Chief of Gates at the top of the course ready to be placed on course. The Chief of gates will assign a gate judge between 2-4 gates on course.
- Understand the following course rules and know how to record and respond to a breach of a rule at the assigned gates:

A competitor will record a **Disqualification (DQ)** if they:

1. *Fail to pass through all the gates by crossing the line between the gates with ski or snowboard and both feet.*

Gate Judges observe and determine that each competitor has or has not passed correctly through the assigned gates. On the Gate Judges sheet provided, record each bib number that passes through the assigned gates and assign them a tick if they passed through all gates correctly or a Cross (X) if they incorrectly went around either of the gates. For all faults, draw a simple and clear diagram of the competitor's path on the gate judge sheet.

At each gate a competitor's skis or snowboard and both feet must pass through THE GATE LINE (the imaginary line joining the bases of the inside poles). The competitor may cross this line from any direction and may also go into or out of the gate, in a "U" fashion, provided the line is crossed.

If a competitor misses a gate and walks back both boot and ski tips / tip of snowboard need to cross the imaginary line. As long as ski tips/board and both feet cross the imaginary line, the competitor is OK, even though:

- Competitor knocks down one or all poles of a gate.
- Competitor slides through the gate on some part of body other than the feet.
- Competitor enters and exits from the same side.
- Competitor passes through gates out of their numerical order.

The Chief of Gates will personally review all faults with the gate judge. Do not discuss faults with coaches, competitors or spectators, during or after the event.

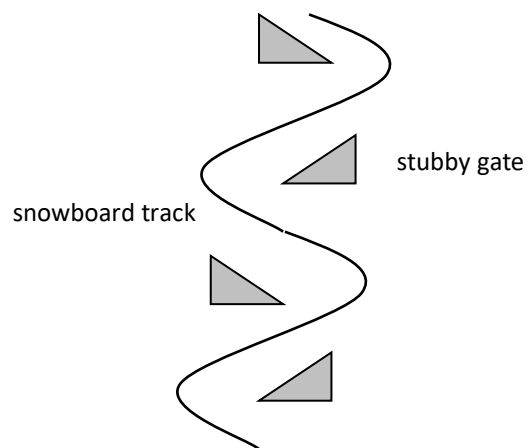
2. *A competitor is physically assisted during their run*

Do not help competitors (get their skis for them, help them back into their skis, etc) if they have fallen at your gates. They must complete the run without assistance or else they will be disqualified.

Examples of Passages Through Gates

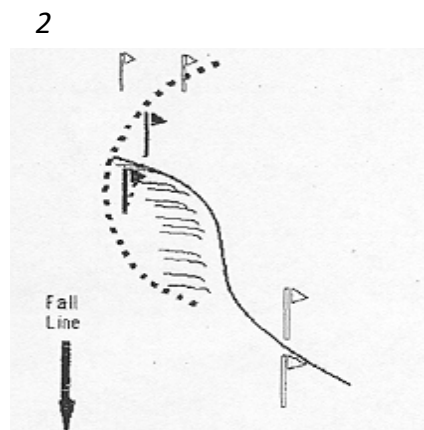
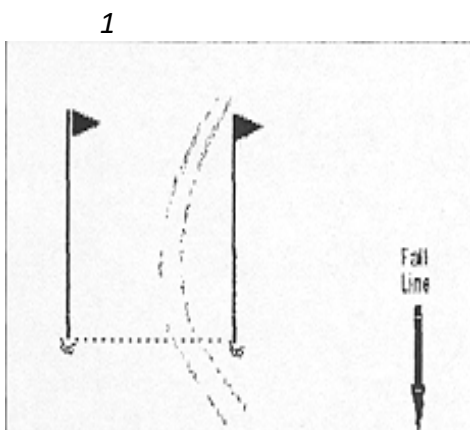
Alpine Course

Snowboard Course

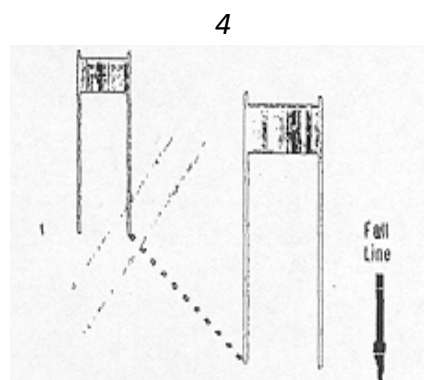
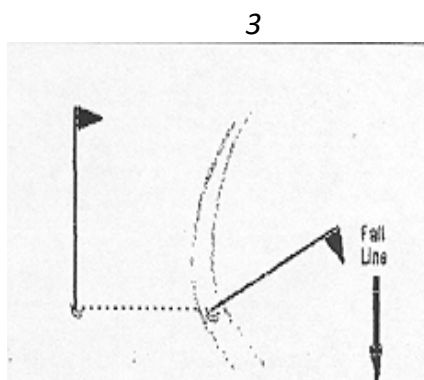


Both feet and the snowboard must go around the stubby gate (the lowest point of the snowboard triangle gate)

Correct Passage Through Gates



Incorrect Passage



Competitor 'straddled' gate (illegal). Gate Judge should check tracks and make a good diagram showing track of each foot separately.

A competitor will record a **Did Not Finish (DNF)** if they:

1. *Did not ski or snowboard through the finish line*

The Finish Referee will record all DNF's, however, gate judges can also record a DNF against a competitor if they are assigned to gates near the finish line.

2. *If a competitor loses one of both skis, and / or comes to a complete stop.*

If this occurs, competitors must pull off to the side of the course and not complete the rest of their run. Competitors must do this immediately as there may be competitor ahead of them on the course. Gate judges may instruct the competitor to come off the course if necessary and collect any lost equipment for them if safe to do so. Always look up at the course (not down) as the next competitor could be on course.

In the situation that a competitor misses a gate and DOES NOT come to a complete stop, a competitor may ask a Gate Judge about the correct gate passage. Gate Judges must reply quickly, accurately, distinctly and loudly:

- **Back** if the gate has been missed, or
- **Go** if the gate in question has been correctly passed.

If a competitor loses a ski or both skis at the last gate, they may cross the finish line without their ski or skis without disqualification.

A competitor may receive a **Re Run** if they:

1. If obstructed on the course due to either:
 - Catching up to a competitor ahead of them
 - Course worker on course
 - Interference of an official, spectator, animal
 - Fallen course gate, fencing

In this situation, it is the competitor's responsibility to leave the course and report the obstruction to the nearest gate judge, ski/snowboard to the bottom of the course and report to the Finish Referee. The competitor is not to finish the course and is not to cross the finish line. A provisional rerun will be granted and will be valid only if a jury confirms it. If the claim for a rerun is shown to be unjustified, the competitor will be disqualified for that run.

Gate Judges may be approached by competitors in this situation. If a competitor who comes off the course and believes they have been hindered and approaches a Gate Judge, they must instruct the competitor to ski/snowboard down the side of the course, not cross the finish line and report to the Finish Referee. Gate judges are not to award the competitor a re-run, this can only be done by the Finish Referee, once they have spoken to the competitor.

If the competitor goes around the obstruction and crosses the finish line, or does not report to the finish referee, they will not receive a rerun.

Other Observations

Although also under other Course Officials jurisdiction, gate judges should watch for and report any rule breaches during course inspection:

- Does not wear helmet and/or a race bib correctly and visibly
- Competitor behaves in unsportsmanlike manner.
- Racing through skiing/riding through gates during the course

Each Gate Judge is issued with a scorecard for completion during the event.

- Date, event, division, boys, girls, etc
- Numbers of the gates assigned.
- Name of gate judge; relief and/or assistant's name
- Sample diagrams of assigned gates drawn in advance to document faults.
- Do not pre number the bib numbers on the sheet, instead, write down the bib number in the order you see them come through your gates.

Name: _____

Date: _____

Course: _____

Run: _____

Gates being
Judged: _____

Where a competitor fails to go through the course, make a diagram of the fault. The diagram should show the gates you were watching, (colour and number); your position; and the path taken by the competitor. Where multiple competitors make the same mistake, the diagram can be shared.

[illegible][illegible]